



countryside seeds limited  
Supplying Quality Seeds

# SUPERIOR GRASS & FODDER CROPS 2018

# HF Seeds

ENGLAND & WALES





HF Seeds have been at the forefront of grass seed innovation for 60 years. Farmers have come to rely on HF Seeds for high quality seeds leading to excellent livestock performance, whether cut or grazed.

The very best varieties, in terms of dry matter production, sward density, winter hardiness and feeding value are carefully selected to combine together into our famous grass seed mixtures. You can feel confident that purchasing an HF Seeds mixture is a good start to establishing a new grass sward, leading to the most cost effective means of ruminant animal production.

HF Seeds have been part of DLF since 1996. DLF are the world's largest grass and clover breeder with over 1,100 employees worldwide, of which 80 are directly employed in grass breeding. This grass breeding and development programme is at the core of what we do and what we have done since 1906. In recent years we have developed varieties with higher levels of digestible fibre – Digestible neutral detergent fibre (DNDF) for greater live weight gain per kilogram of dry matter eaten as well as seed treatments to improve the success of overseeding and deeper rooting more stress tolerant festuloliums or Advanced™ Grasses.

Hailes Farm at Didbrook in Gloucestershire is the home of our UK trials work. Here we have 8500 grass and clover plots on trial as well as over 70 mixture trial plots. This allows us to assess how well individual varieties perform when sown along with other varieties and species. In Ireland we have 2200 plots sown at our Faithlegg site near Waterford, as well as 150 mixture plots, all of which adds to the information used to formulate our mixtures.

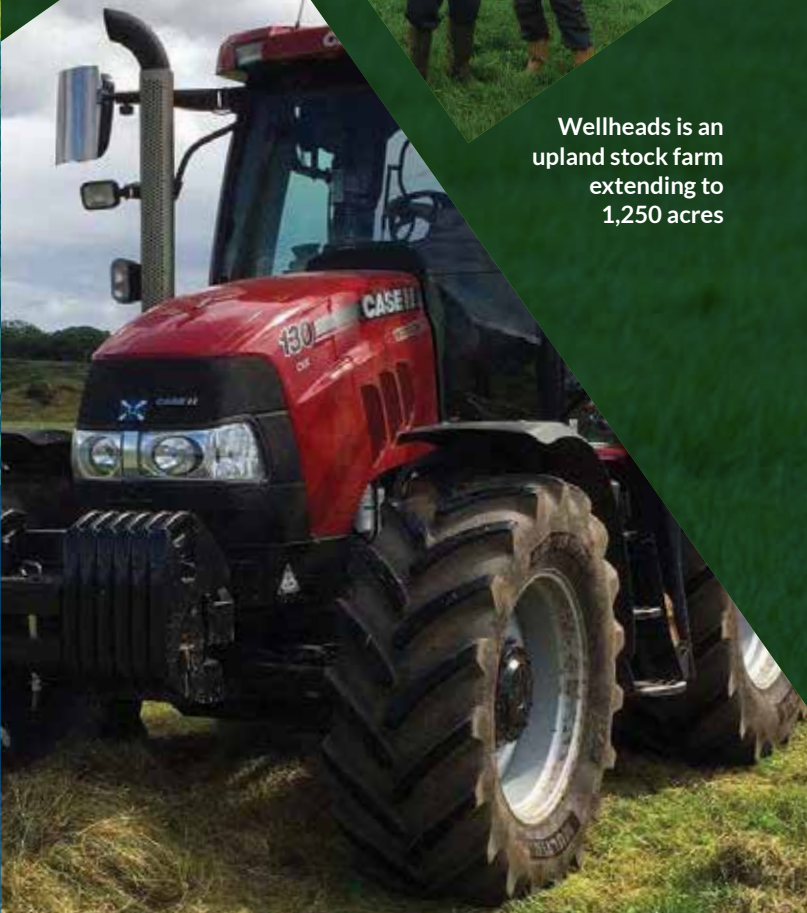
With the backing of DLF, HF Seeds continues to go from strength to strength.



Contents

Mixture Quality	04
Forage Quality	05
Mixture Selector	06
Short Term Mixtures	08
Medium Term Mixtures	09
Long Term Mixtures	13
Specialist Mixtures	15
Herbal Mixtures	18
Overseeding Mixtures	19
High Clover, Organic Mixtures & DLF Alfalfa	20
Grass & Clover Varieties	22
Root & Fodder Crops	24
Stewardship	26
Greening & HF Countryside	27

Leading the field for over 50 years



Wellheads is an upland stock farm extending to 1,250 acres

John is a former director of RHASS and of Aberdeen and Northern Marts

Good quality grass is essential to feed our 250 suckler cows (half spring/autumn calving) and 1,000 breeding ewes. We aim to produce quality Charolais yearling store calves and to sell the majority of our Suffolk and Texel cross lambs off their mothers, straight from grass. Farming from 600 to 1,230 feet in Aberdeenshire demands that grass mixtures perform well in terms of winter hardiness, sward density and livestock performance. We have found over many years that HF mixtures always produce high quality grass and plenty of it. Ewes and lambs are heavily stocked post lambing before moving to higher ground in early May, allowing a big silage crop to be taken in the first days of July. September born weaned calves do particularly well on these swards from early August through to sale at the end of September. We use both HF 11 and HF PD at Wellheads.

John Gordon  
John, Fiona and Ewan Gordon,  
Wellheads, Huntly

Picture shows John (father) and Ewan (son) Gordon





HF Mixture Quality

Good grass mixture design begins with the assessment of individual variety characteristics and then uses this information to combine mixture components in different proportions to produce the best possible mixture for the intended duration and purpose of the final sward.

High yields of dry matter will always be one of the most important considerations, along with sward density and digestibility. It is important to also consider the ability of the mixture to perform under stress, drought or otherwise, its palatability and how resistant the mixture is to certain diseases – such as crown rust, mildew and increasingly dreschlera. Winter hardiness and density are the two main contributing factors leading to good persistency. HF Seeds mixtures are renowned for their persistency across harsh northern areas and their longevity, due to consistent performance over many years.

04

Germination

There is a minimum germination for all certified seed used in the UK, but these standards are actually quite low. HF Seed varieties are selected from our own seed stocks that are at least 10% higher germination than the UK certification minimum standard. More live seeds in every bag is very important in producing dense, long lasting swards.

Species	UK Minimum Germination	HF Minimum Germination	HF Average 2017 Germination
Italian Ryegrass	75.0%	90.0%	94.2%
Perennial Ryegrass	80.0%	90.0%	93.9%
Timothy	80.0%	90.0%	95.1%

Purity

UK grass seed certification also allows the possibility of the presence of relatively high levels of serious grassland weeds. At HF Seeds we impose our own freedom from weeds standards, which are unequalled elsewhere.

This table shows the potential number of weed seeds which could be sown (per acre) each time a field is reseeded. The advantages of HF Seeds rigorous purity standards are easy to see.

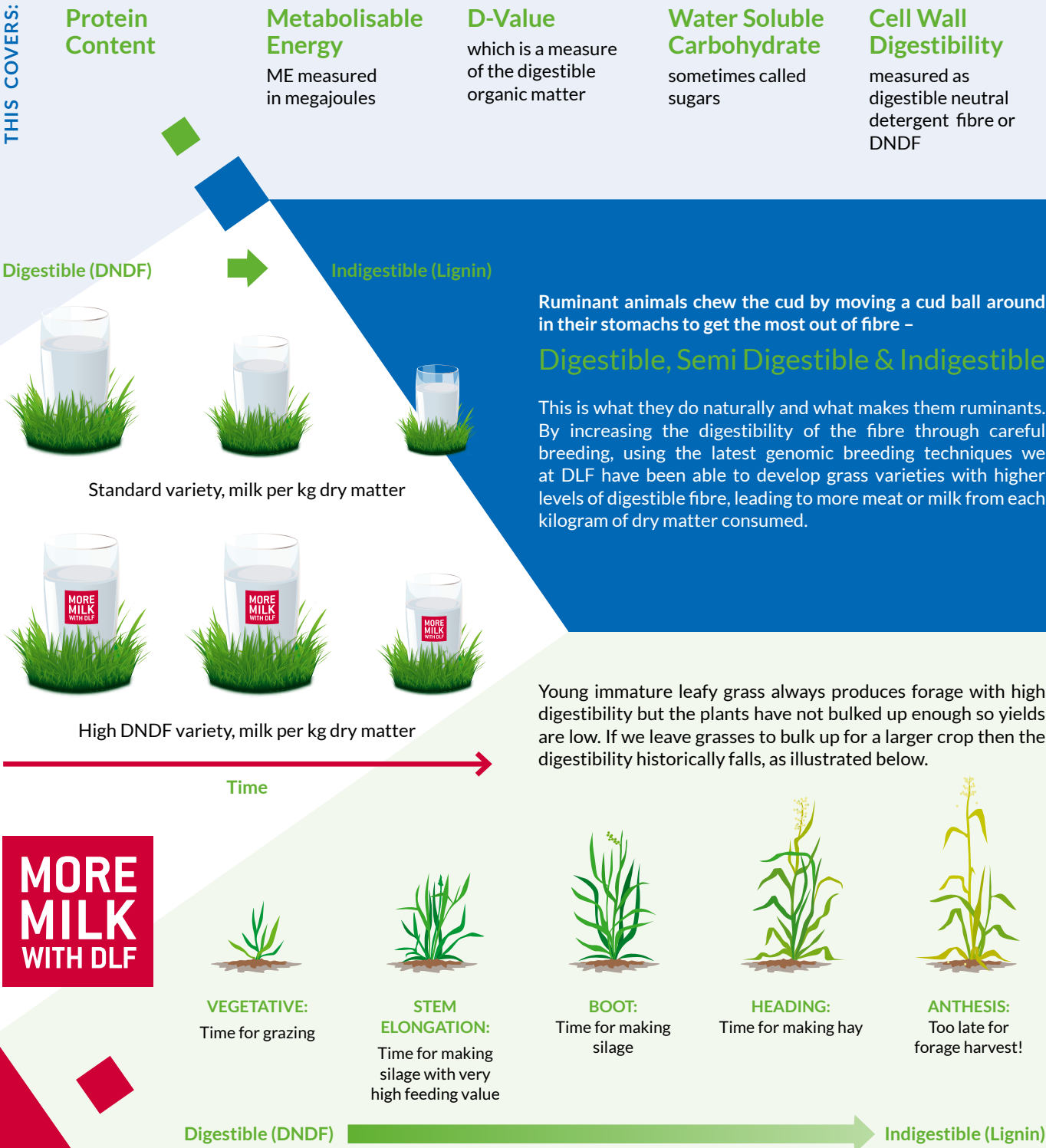
Possible Weed Seed Numbers per acre	UK Minimum Purity Standard	HF Minimum Purity Standard
Docks	1,250	0
Couch	30,000	2,500
Blackgrass	25,000	2,500

I've been using HF mixtures for many years and always find that they do very well in our high rainfall area. We need good quality early grass and plenty of it, as well as the ability to grow big silage crops of top quality.

Bert and James Mitchell  
Killellan Farm, Toward, Dunoon, Argyll

HF Forage Quality

The forage quality of grass refers to a range of measurements for different aspects of what each kilogram of dry matter can supply.



05

High DNDF varieties do not suffer the same reduction in digestibility as the grass plants mature and so we are able to get the increased yield as plants bulk up, without as big a reduction in digestibility as seen with conventional varieties. HF Mixtures now contain more DNDF varieties than ever before **NIFTY, SOLOMON, DIWAN (T), PASTOUR, ASPECT (T) & TWYMAX (T)** for Scotland and Ireland. Specifically for England and Wales we use **CANCAN, CAVENDISH & ROMARK** as well.

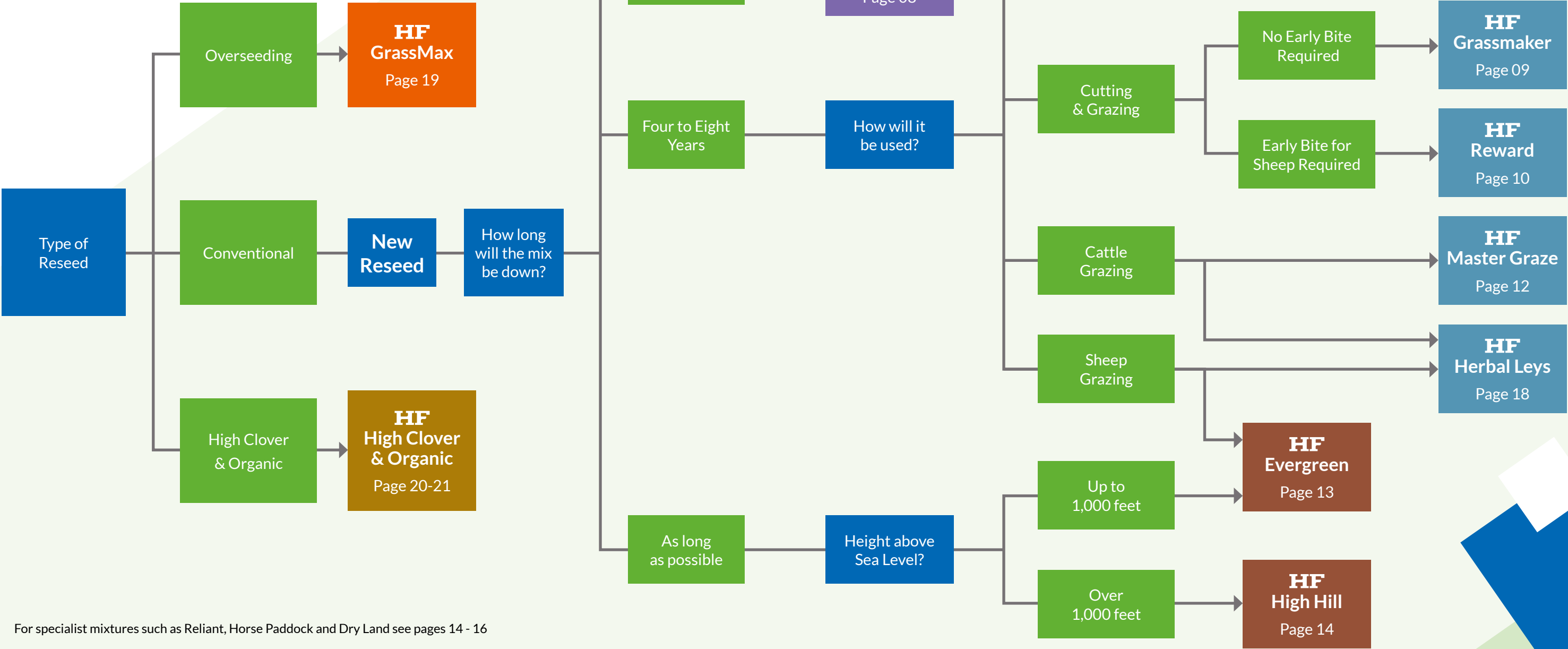
HF Mixture Selector

HF mixtures are designed and formulated to meet specific sward uses.

Significant differences between mixtures are not always obvious but even small differences can change the way in which the final sward behaves. Selection of the wrong mixture will inevitably mean that the sward will not perform up to expectations simply because it is the wrong mix for the job.

The HF mixture selector is designed to help answer many of the common questions in mixture selection, however it is not possible to cater for every situation and if in doubt contact HF Seeds for further advice.

01506 674800 FOR ALL YOUR FORAGE SOLUTIONS



For specialist mixtures such as Reliant, Horse Paddock and Dry Land see pages 14 - 16

**DISCLAIMER**  
Any information provided in this catalogue is given in good faith and to the best of our existing knowledge. Any advice should therefore be taken as a general guide only and not relied upon for all conditions and circumstances. HF Seeds cannot accept any legal liability for information given in this guide. In any instance where there are shortages of specified varieties HF Seeds reserves the right to substitute equivalent varieties.



# HF Yielder

1 to 2 year mixture

- ALAMO**  
Italian Ryegrass
- CAZZANO**  
Tetraploid  
Italian Ryegrass
- PERSEUS**  
Advanced™ Italian Ryegrass

## Mainly Cutting Mixture

**Bonus is designed for maximum yield over two full production years**

- The top yielding mixture
- High tetraploid content ensures high quality silage
- Capable of 3 or 4 quality cuts per year
- Not suitable for undersowing a cereal as too aggressive

**Recommended sowing rate:**  
13-14 kg/acre 32-35 kg/HA



“

Grass in March and April is worth far more to me than any other month. It cuts my ewe feed bill and gets the lambs off to a great start, with them all finishing straight off the grass. HF Dividend gives me this vital early production and plenty of grass through to the end of the year.

**Simon Gray**  
Middle Ord Farm,  
Berwick Upon Tweed



“

A long term customer of HF Seeds, using both HF Dividend and HF Evergreen.

**Stewart Anderson**  
Stouslie Farm, Hawick

## Mainly Cutting Mixture

**Surecrop is a high performance mixture suitable for Cutting or Grazing**

- Contains a high proportion of Advanced™ Grasses for big yields and stress tolerance
- Will provide 3 full years of quality silage or grazing
- High tetraploid content for rapid fermentation in the pit or grazing palatability
- HF CUTTING White Clover blend included at low percentage rate but may be changed to Red Clover

**Recommended sowing rate:**  
13-14 kg/acre 32-35 kg/HA

# HF Dividend

3 year mixture

- PERSEUS**  
Advanced™ Italian Ryegrass
- LOFA**  
Advanced™ Hybrid Ryegrass
- SOLID**  
Tetraploid  
Hybrid Ryegrass
- CITELIAC**  
Tetraploid  
Hybrid Ryegrass
- SEAGOE**  
Tetraploid  
Intermediate Perennial Ryegrass
- DIWAN**  
Tetraploid  
Intermediate Perennial Ryegrass
- HF CUTTING CLOVER BLEND**  
White Clover

# HF Grassmaker

4 to 6 year mixture

- BOYNE**  
Intermediate Perennial Ryegrass
- NIFTY**  
Intermediate Perennial Ryegrass
- DIWAN**  
Tetraploid  
Intermediate Perennial Ryegrass
- SEAGOE**  
Tetraploid  
Intermediate Perennial Ryegrass
- CAVENDISH**  
Late Perennial Ryegrass
- ROMARK**  
Late Perennial Ryegrass
- TODDINGTON**  
Late Perennial Ryegrass
- ALFONSO**  
Tetraploid  
Late Perennial Ryegrass
- DOLINA**  
Timothy
- PROMESSE**  
Timothy
- HF DUAL PURPOSE CLOVER BLEND**  
White Clover

## Dual Purpose Mixture

**A flexible, rotational mixture renowned for its consistent yield and performance, under different management regimes**

- One of our best selling mixture across the UK
- Contains the very best and most productive varieties
- Persistence is ensured by top class sward density and winter hardiness
- Specifically formulated for high DNDF forage, giving increased meat or milk production per kg of dry matter

**Recommended sowing rate:**  
13-15 kg/acre 32-35 kg/HA

“

Early grass is very important to us as we run 800 ewes with their lambs as well as 120 suckler cows and their calves. After an early graze our fields are closed off from the sheep at the end of April and the later heading varieties gives us a high quality 1st cut. We contract fatten a further 1200 lambs so tight swards and strong aftermaths are important. I have used the HF mixtures for more than 10 years and am very pleased with their performance in this high rainfall area.

**Mr Ian Knight**  
Stepney Farms, Cumbria





HF  
Reward

4 to 8 year mixture

<b>GENESIS</b> Early Perennial Ryegrass
<b>BOYNE</b> Intermediate Perennial Ryegrass
<b>NIFTY</b> Intermediate Perennial Ryegrass
<b>DIWAN</b> Tetraploid Intermediate Perennial Ryegrass
<b>SEAGOE</b> Tetraploid Intermediate Perennial Ryegrass

<b>ROMARK</b> Late Perennial Ryegrass
<b>CAVENDISH</b> Late Perennial Ryegrass
<b>ALFONSO</b> Tetraploid Late Perennial Ryegrass
<b>ASPECT</b> Tetraploid Late Perennial Ryegrass
<b>HF DUAL PURPOSE CLOVER BLEND</b> White Clover

Dual Purpose Mixture

Similar to HF Grassmaker but containing early Perennial Ryegrass for early bite

- Specifically formulated for early spring growth
- Designed for early sheep grazing, prior to first cut silage
- Offers great flexibility to beef and sheep farms
- High inclusion of White Clover, the same as HF Grassmaker

Recommended sowing rate:  
13-15 kg/acre 32-35 kg/HA

HF  
Supersward

4 to 8 year mixture

<b>BOYNE</b> Intermediate Perennial Ryegrass
<b>SOLOMON</b> Intermediate Perennial Ryegrass
<b>SEAGOE</b> Tetraploid Intermediate Perennial Ryegrass
<b>TODDINGTON</b> Late Perennial Ryegrass
<b>CAVENDISH</b> Late Perennial Ryegrass

<b>ASPECT</b> Tetraploid Late Perennial Ryegrass
<b>ALFONSO</b> Tetraploid Late Perennial Ryegrass
<b>DOLINA</b> Timothy
<b>PROMESSE</b> Timothy
<b>HF CUTTING CLOVER BLEND</b> White Clover

Dual Purpose/Cutting Mixture

Supersward is a high performance mixture suitable for Cutting or Grazing

- Designed with later heading varieties for later areas
- Varieties selected for high cutting yield and quality
- Slightly higher inclusion of Timothy for colder and later areas
- Excellent winter hardiness and sward density

Recommended sowing rate:  
14-15 kg/acre 32-35 kg/HA

HF  
Master Silage

3 to 6 year mixture

<b>LOFA</b> Advanced™ Hybrid Ryegrass
<b>CITELIAC</b> Tetraploid Hybrid Ryegrass
<b>BOYNE</b> Intermediate Perennial Ryegrass
<b>DIWAN</b> Tetraploid Intermediate Perennial Ryegrass
<b>SEAGOE</b> Tetraploid Intermediate Perennial Ryegrass
<b>TODDINGTON</b> Late Perennial Ryegrass
<b>ASPECT</b> Tetraploid Late Perennial Ryegrass
<b>ALFONSO</b> Tetraploid Late Perennial Ryegrass

Intensive Cutting Mixture

Specifically designed for 3, 4 or even 5 cuts

- Formulated for high yields at first cut and subsequent cuts
- Designed for fast regrowth and quality, leafy silage
- Contains a substantial proportion of High DNDF varieties
- High sugar grasses and no Timothy ensures top quality silage

Recommended sowing rate:  
13-15 kg/acre 32-35 kg/HA

“

I have recently installed robotic milking for my jersey herd and to suit the system I now zero graze and aim for top quality silage. Milk solids from forage is the profit driver and I find HF mixtures to be very easily managed. HF Master Silage suits the zero grazer well on the drier ground, cows really like it and it reduces rotation days due to its rapid regrowth.

Samuel Johnson  
Fintona  
County Tyrone





## HF Master Graze

4 to 8 year mixture

**BOYNE**  
Intermediate Perennial Ryegrass

**NIFTY**  
Intermediate Perennial Ryegrass

**SEAGOE**  
Tetraploid  
Intermediate Perennial Ryegrass

**ROMARK**  
Late Perennial Ryegrass

**CANCAN**  
Late Perennial Ryegrass

**TODDINGTON**  
Late Perennial Ryegrass

**ALFONSO**  
Tetraploid  
Late Perennial Ryegrass

**ASPECT**  
Tetraploid  
Late Perennial Ryegrass

**HF GRAZING CLOVER BLEND**  
White Clover

### Intensive Grazing Mixture

The ultimate cattle grazing mixture

- High tillering varieties selected for a dense, leafy sward
- Formulated to even out grass production for the whole grazing year
- Palatable, high sugar varieties with excellent sward density and with good levels of DNDF
- A high inclusion of HF Grazing White Clover blend and no Timothy leads to improved animal performance

Recommended sowing rate:  
13-15 kg/acre 32-35 kg/HA



“We have 100 spring calving cows of our own and we finish about 500 head of cattle in total, so good quality grazing and silage are very important to us. Some cattle are also fattened off the grass every year, with in field hoppers allowing us to top up with our own barley and protein mix later in the season. We also fatten about 600 lambs off the grass through the winter months. HF grass seed mixtures consistently yield very well for us as part of our rotational grass system when both cut and when grazed. This helps keep the farm fertile for our cereal crops that are a very important part of the farm income.

**Neil Davidson**  
Auchtydonald  
Mintlaw, Aberdeenshire



## HF Evergreen

8 year+ mixture

**GENESIS**  
Early Perennial Ryegrass

**NIFTY**  
Intermediate Perennial Ryegrass

**BOYNE**  
Intermediate Perennial Ryegrass

**SEAGOE**  
Tetraploid  
Intermediate Perennial Ryegrass

**DIWAN**  
Tetraploid  
Intermediate Perennial Ryegrass

**CANCAN**  
Late Perennial Ryegrass

**ROMARK**  
Late Perennial Ryegrass

**ASPECT**  
Tetraploid  
Late Perennial Ryegrass

**DOLINA**  
Timothy

**PROMESSE**  
Timothy

**HF DUAL PURPOSE CLOVER BLEND**  
White Clover

### Permanent Mixture

The famous versatile long term mixture giving quality forage for many years

- A dual purpose mixture which has become synonymous with quality permanent grass
- Very persistent and winter hardy which contribute to its longevity
- Includes high levels of White Clover and Timothy, as well as a little creeping red fescue for increased density
- Will produce plenty of early grass, even in harsher parts of the UK

Recommended sowing rate:  
14-16 kg/acre 35-40 kg/HA



“

We have both our own ewes and wintering sheep from Towiemore running over all our grassland through the winter months and into the spring, so we need a mixture that is dense and hardy, but will still produce a big silage cut in June. The silage fields are then grazed with cows and calves right into November. The silage quality is so good we have been able to reduce our bought in feed requirements for both sheep and cattle, which are sold store, often to repeat buyers.

HF mixtures are the best seeds for our ground and really suit our farming system.

**Mr Graeme Shand**  
Farm manager for Mr Ian Henderson  
Wester Elchies Farm, Craigellachie, Morayshire





## HF High Hill

8 year+ mixture

**BOYNE**  
Intermediate Perennial Ryegrass

**ASTONLORD**  
Intermediate Perennial Ryegrass

**NIFTY**  
Late Perennial Ryegrass

**GLENROYAL**  
Late Perennial Ryegrass

**GLENVEAGH**  
Late Perennial Ryegrass

**ASPECT**  
Tetraploid  
Late Perennial Ryegrass

**DOLINA**  
Timothy

**PROMESSE**  
Timothy

**MAXIMA**  
Creeping Red Fescue

**HF GRAZING CLOVER BLEND**  
White Clover

### Permanent Mixture

The long term grazing mixture

- Designed to survive in harsh upland areas and to produce high grazing yields
- Ingredients are selected for cold, snow tolerance and winter hardiness
- Contains a high inclusion of dense, leafy late Perennial Ryegrasses
- High content of both HF Grazing Clover blend and Timothy for lower input situations

Recommended sowing rate:  
14-16 kg/acre 35-40 kg/HA

## HF Haymaker

4 to 8 year mixture

**SOLOMON**  
Intermediate Perennial Ryegrass

**BOYNE**  
Intermediate Perennial Ryegrass

**TODDINGTON**  
Late Perennial Ryegrass

**CAVENDISH**  
Late Perennial Ryegrass

**LAURA**  
Meadow Fescue

**DOLINA**  
Timothy

**PROMESSE**  
Timothy

**HF DUAL PURPOSE CLOVER BLEND**  
White Clover

### Hay Making Mixture

A modern mixture for traditional Haymaking

- A mixture of species used specifically in hay making
- Big yields of easily won hay (no tetraploid Ryegrasses)
- High Timothy inclusion
- Good winter hardiness ensures consistent bulk for many years

Recommended sowing rate:  
13-15 kg/acre 32-37 kg/HA

14

## HF Reliant

8 year+ mixture

**GENESIS**  
Early Perennial Ryegrass

**BOYNE**  
Intermediate Perennial Ryegrass

**MAGICIAN**  
Tetraploid  
Intermediate Perennial Ryegrass

**GLENVEAGH**  
Late Perennial Ryegrass

**ASPECT**  
Tetraploid  
Late Perennial Ryegrass

**DOLINA**  
Timothy

**PROMESSE**  
Timothy

**DONATA**  
Cocksfoot

**MAXIMA**  
Creeping Red Fescue

**HF GRAZING CLOVER BLEND**  
White Clover

### Permanent Mixture

A traditional mixture for more extensive or drought prone areas

- Contains Cocksfoot for early grass, winter survival and drought tolerance
- Formulated to provide season long production and outstanding persistency
- Can be closed off and cut for hay or silage
- Varieties and species selected for very good sward density

Recommended sowing rate:  
14-16 kg/acre 35-40 kg/HA

## HF Horse Paddock

4 to 8 year mixture

**SOLOMON**  
Intermediate Perennial Ryegrass

**BOYNE**  
Intermediate Perennial Ryegrass

**GLENVEAGH**  
Late Perennial Ryegrass

**MAXIMA**  
Creeping Red Fescue

**PROMESSE**  
Timothy

### Equine Use Mixture

A hard wearing, persistent sward designed for horses

- Ryegrasses selected for top sward density ratings
- Formulated with attractive but low sugar forage to avoid laminitis
- Creeping Red Fescue binds the sward and helps repair poaching
- High Timothy content for grazing horses and to boost haymaking if required

Recommended sowing rate:  
15 kg/acre 37 kg/HA

15

**“**We've sown nothing but HF Mixtures for a number of years now and are delighted with how they yield. The farm lies at 1000ft above sea level and with 300 dairy cows and followers to feed we need lots of very high quality silage. We were pleased to win a national silage competition in 2017 with our top class silage.

**3 generations of the Hunter family**  
Cape Farm, Berrier, Penrith



## HF Dryland

3 to 5 year mixture

**MAHULENA**  
Advanced™ Tall Fescue

**PERSEUS**  
Advanced™ Italian Ryegrass

**LOFA**  
Advanced™ Hybrid Ryegrass

**MAGICIAN**  
Tetraploid  
Intermediate Perennial Ryegrass

**ASPECT**  
Tetraploid  
Late Perennial Ryegrass

**DONATA**  
Cocksfoot

### Drought Prone Areas Mixture

A specialist mixture for sandy/light soils

- All species are very deep rooting
- Will produce a large bulk of forage, even in drought prone soil
- Excellent disease resistance particularly crown rust which can be a big problem in hot, dry conditions
- Suitable for cutting or grazing

Recommended sowing rate:  
15 kg/acre 37 kg/HA



## HF CC

Over winter/early spring mixture

**MERIBEL**  
Italian Ryegrass

**EMERALD**  
Forage Rape

**GREEN GLOBE**  
White Turnip

### Sheep Grazing Mixture

Designed to produce autumn and spring grazing

- Green Globe is a white fleshed, green skinned turnip providing good winter forage
- Do not leave it to grow too tall or the Italian Ryegrass will suffer
- A highly productive catch crop mixture
- Can be used for ewes or fattening lambs

Recommended sowing rate:  
9 kg/acre 22 kg/HA

“

We have a mixed farm in the Howe of Alford, Aberdeenshire with a beef fattening enterprise and a flock of Texel cross Ewes. The whole farm is sown to HF mixtures, which gives us plenty of early spring grass for Ewes and Lambs, high quality silage in June and leafy summer grazing for the beef cattle. Consistency is important to us and we get cracking dense swards, that are persistent and come through the winter here well.

**Alan Grieve**  
Elrick Farm  
Alford, Aberdeenshire



## HF Multipurpose Landscaper

Long term mixture

**GLENVEAGH**  
Late Perennial Ryegrass

**MAXIMA**  
Creeping Red Fescue

### Landscaping Mixture

Ideal for riverbanks, verges, fruit farms and orchards

- Extreme sward density and good wear tolerance
- Designed to be low maintenance
- Much lower sowing rate than an amenity type mixture
- Has an attractive appearance with a good dark green colour

Recommended sowing rate:  
25 kg/acre 65 kg/HA

“

The herd is now 80 Holstein Friesian and Jersey cross cows averaging 6250 litres per year, of which 3750 litres is produced from forage. Grass production averages between 14 - 15 tonnes DM/ha/annum, with 2017 being a record year with 16.2 tonnes DM/ha/annum, despite a very wet back end. The key is early turnout and 10 grazings from each paddock. The whole farm is sown with HF Grassmaker, with the exception of 1 heavier paddock which is sown HF Evergreen.

**David Hunter**  
Newtownstewart  
County Tyrone

## HF CD

Over winter/early spring mixture

**MERIBEL**  
Italian Ryegrass

**EMERALD**  
Forage Rape

### Sheep Grazing Mixture

Similar to HF CC, but without the white turnips

- Our most popular catch crop mixture
- Great early spring growth from the Italian Ryegrass
- Graze early to avoid damaging the Italian Ryegrass
- Can be used for ewes or fattening lambs

Recommended sowing rate:  
9 kg/acre 22 kg/HA





## HF Rapid Gain

3 to 4 year mixture

**CHOICE**  
Perennial Chicory

**TONIC**  
Plantain – Ribgrass

**HF RED CLOVER BLEND**  
Red Clover

**HF GRAZING CLOVER BLEND**  
White Clover

**ASPECT**  
Tetraploid  
Late Perennial Ryegrass

### Rotational Grazing Mixture

A new mixture from HF for both cattle and sheep contains both perennial chicory and plantain

- Very high protein, energy and mineral content for big live weight gains
- Drought tolerant and shown to reduce worm burden in lambs
- Rotationally graze and best suited to lighter soils with a good pH
- Clovers help livestock performance and reduce nitrogen requirements

► **Recommended sowing rate:**  
8 kg/acre 20 kg/HA

### Rotational Grazing Mixture

Another new mixture from HF for both cattle and sheep contains plantain

- Highly palatable and nutritious as long as it is well managed
- More tolerant of poorer soils and lower pH than HF Rapid Gain
- The clovers have been selected to withstand hard rotational grazing
- Aspect is a late, dense tetraploid ryegrass which is known for its exceptional palatability and ease of rotational grazing management

► **Recommended sowing rate:**  
8 kg/acre 20 kg/HA

## HF Gromore

3 to 4 year mixture

**TONIC**  
Plantain – Ribgrass

**HF RED CLOVER BLEND**  
Red Clover

**HF GRAZING CLOVER BLEND**  
White Clover

**ASPECT**  
Tetraploid  
Late Perennial Ryegrass

## HF GrassMax<sup>TM</sup> CUT

**CITELIAC**  
Tetraploid  
Hybrid Ryegrass

**MAGICIAN**  
Tetraploid  
Intermediate Perennial Ryegrass

**ALFONSO**  
Tetraploid  
Late Perennial Ryegrass

**HF CUTTING CLOVER BLEND**  
White Clover

### Overseeding Mixture

#### For cutting fields

- Ryegrass content is 100% large tetraploid seeds which establish aggressively and boost sugar content
- Designed to improve silage yields in tired or open swards, sow after the last cut of the season
- Is also available in a Red Clover option, with 30% inclusion (HF GRASSMAX RED)
- Has 10% HF White Clover Cutting blend as a standard, but also available as a no clover option

► **Recommended sowing rate:**  
10 kg/acre 25 kg/HA

Iain MacKenzie  
oversowing fields in Sutherland

Photo by Kirsty MacKenzie

## HF GrassMax<sup>TM</sup> GRAZE

**MAGICIAN**  
Tetraploid  
Intermediate Perennial Ryegrass

**TWYMAX**  
Tetraploid  
Late Perennial Ryegrass

**ASPECT**  
Tetraploid  
Late Perennial Ryegrass

**HF GRAZING CLOVER BLEND**  
White Clover

### Overseeding Mixture

#### For grazing fields

- Varieties specifically selected for their grazing yield
- High sugar grasses used to increase palatability and improve livestock performance
- Can be drilled at any time during the grazing season
- Has 10% HF Grazing White Clover as standard, but also available as a no clover option

► **Recommended sowing rate:**  
10 kg/acre 25 kg/HA

## HF GrassMax<sup>TM</sup> DUAL PURPOSE

**CITELIAC**  
Tetraploid  
Hybrid Ryegrass

**MAGICIAN**  
Tetraploid  
Intermediate Perennial Ryegrass

**ASPECT**  
Tetraploid  
Late Perennial Ryegrass

**HF DUAL PURPOSE CLOVER BLEND**  
White Clover

### Overseeding Mixture

#### For cutting and grazing fields

- The top selling Overseeding mixture for cutting and grazing fields
- Ryegrass varieties are selected for performance under both cutting and grazing
- Very good resistance to all the main grass diseases
- Has 10% HF Dual Purpose White Clover as standard. Also available as a no clover option

► **Recommended sowing rate:**  
10 kg/acre 25 kg/HA





HIGH CLOVER & ORGANIC MIXTURES

All the HF High Clover Mixtures are available as Organic Mixtures (70% Organic Content)

HF High Clover SHORT TERM

2 to 3 year mixture

SOLID  
Tetraploid  
Hybrid Ryegrass

CITELIAC  
Tetraploid  
Hybrid Ryegrass

LOFA  
Advanced™ Hybrid Ryegrass

PERSEUS  
Advanced™ Italian Ryegrass

HF RED CLOVER BLEND  
Red Clover

Mostly Cutting Mixture

A High Performance Red Clover Mixture

- Red Clover is included at the optimum 25% rate to produce lots of high protein silage
- Contains aggressive, fast growing species that can compete with the Red Clover
- High sugar varieties included to give good fermentation
- Can give up to 3 cuts per year and can last for 3 full years

Recommended sowing rate:  
12-14 kg/acre 30-35 kg/HA

HF High Clover GRAZE

5 year+ mixture

ASTONL LORD  
Intermediate Perennial Ryegrass

NIFTY  
Intermediate Perennial Ryegrass

GLENROYAL  
Late Perennial Ryegrass

PASTOUR  
Late Perennial Ryegrass

TODDINGTON  
Late Perennial Ryegrass

ALFONSO  
Tetraploid  
Late Perennial Ryegrass

ASPECT  
Tetraploid  
Late Perennial Ryegrass

HF GRAZING CLOVER BLEND  
White Clover

Mostly Grazing Mixture

Leafy, dense swards

- Varieties are selected for their grazing performance
- Contains mostly late Perennial Ryegrass that can withstand heavy grazing
- High DNDF varieties leading to excellent animal performance
- The small and medium leaf clovers are selected for their persistency under grazing

Recommended sowing rate:  
14-15 kg/acre 35-37 kg/HA



“

As organic farmers we need top quality grass swards to produce as much livestock performance from grass as is possible. Lambing in April, but still selling 97% of our 1500 lambs straight off grass by the first week in November, with no hard feeding, means that our clover rich swards really need to put kilos onto livestock quickly. The ewes are housed in mid January and are feed on red clover silage, as are the 250/300 head of cattle we fatten every year. HF high clover organic mixtures consistently give us the performance we require. They are dense, hard wearing and give us lots of highly nutritious grass over an extended season.

Rob Parrish  
Hassendeanburn,  
Denholm, Hawick



HF High Clover DUAL PURPOSE

4 to 8 year mixture

COPELAND  
Intermediate Perennial Ryegrass

DIWAN  
Tetraploid  
Intermediate Perennial Ryegrass

MAGICIAN  
Tetraploid  
Intermediate Perennial Ryegrass

GLENVEAGH  
Late Perennial Ryegrass

TODDINGTON  
Late Perennial Ryegrass



ALFONSO  
Tetraploid  
Late Perennial Ryegrass

ASPECT  
Tetraploid  
Late Perennial Ryegrass

PROMESSE  
Timothy

HF RED CLOVER BLEND  
Red Clover

HF DUAL PURPOSE CLOVER BLEND  
White Clover

A Dual Purpose Mixture

A very flexible mixture

- Contains high DNDF varieties with excellent forage quality
- High percentage of tetraploids to help fermentation and aid the growth of clovers
- Small Red Clover inclusion to help with nitrogen fixation in the early years
- A high proportion of HF Dual Purpose Clover is included for increased production

Recommended sowing rate:  
14-15 kg/acre 35-37 kg/HA

HF Alfalfa

Over winter/early spring crop

Mostly Cutting Crop

HF Alfalfa is a leguminous crop which suits light or medium soils

- Increased self-sufficiency with 18 – 20% protein
- Higher feed intakes and improved digestibility
- Fixes nitrogen for companion and subsequent crops
- Has a very long, deep tap root which makes Alfalfa drought tolerant and improves soil structure a lot

Recommended sowing rate:  
10 kg/acre 25 kg/HA







Variety	Specie	Description	SAC	NIAB
PERENNIAL RYE GRASSES				
Genesis	Early	An excellent Perennial Ryegrass with exceptional quality & grazing yields	1	✓
Solomon	Intermediate	Great all round variety, with high DNDF & D value	1	✓
Nifty	Intermediate	Excellent ground cover combined with exceptional grazing yields	1	✓
Premium (Organic Only)	Intermediate	Good mid season growth, A dual purpose variety	1	✓
Astonlord	Intermediate	Excellent grazing yields & quality throughout the season	1	
Boyne	Intermediate	Highest yielding variety in this group. With very dense characteristics	1	✓
Magician	Intermediate (T)	Produces very high grazing yields throughout the growing season	1	
Seagoe	Intermediate (T)	Highest conservation yields in this group; outstanding disease resistance	1	✓
Diwan New	Intermediate (T)	Good all round variety offering good yields and high DNDF	1	✓
Cancan	Late	A great late heading dense variety with exceptional autumn growth	2	✓
Romark	Late	A tried and tested variety with excellent mid season grazing	2	✓
Toddington	Late	Good dual purpose variety with good disease resistance	1	✓
Cavendish New	Late	A high DNDF variety with good ground cover scores	2	✓
Glenroyal	Late	Good mid and late season growth, with a very dense sward rating	1	
Glenveagh	Late	Good mid to late season growth with high sward density	1	
Aspect	Late (T)	Dense, winter hardy and exceptionally palatable	1	✓
Alfonso	Late (T)	Very dense variety with both good early and late growth	1	✓

Variety	Specie	Description	SAC	NIAB
FESTULOLIUM				
Mahulena New	Tall Fescue Festulolium	High yielding, winter hardy & persistent No stems in regrowth		
Lofa	Hybrid Festulolium	Excellent stress tolerances, with fantastic early growth		
Perun	Italian Festulolium	Better persistence than a traditional Italian, with high quality forage		
Perseus	Italian Festulolium	Huge production of leafy growth from this late heading Festulolium		
ITALIAN RYEGRASS				
Alamo	Italian	One of the highest yielding Italians on the UK market	1	✓
Cazzano	Italian (T)	An excellent Tetraploid Italian Ryegrass with superb second year growth	2	✓
HYBRID RYEGRASS				
Solid	Hybrid (T)	High yielding dense hybrid with good winter hardiness	2	✓
Citeliac	Hybrid (T)	A very good looking Perennial type of hybrid with good early growth	2	✓
TIMOTHY				
Promesse	Timothy	Good dense variety with excellent Late season & aftermath growth	1	✓
Dolina	Timothy	Winter hardy with good early & late season growth	1	✓
WHITE CLOVER				
Brianna	White Clover Large	New and extremely large white clover which has excellent scores in all categories	1	✓
Violin	White Clover Medium	Highest yielding clover on the recommended list, outstanding variety	1	✓
Grasslands Bounty	White Clover Medium	Consistent performer with good density & Autumn production	2	✓
Iona	White Clover Medium	Excellent growth throughout the season recommended for use throughout the UK	1	✓
Buddy	White Clover Medium	An Excellent medium leaved white clover with top yields in the summer months	1	✓
Galway	White Clover Small	Excellent persistence under both cutting and hard grazing	2	✓
Rivendel	White Clover Small	A useful small leaved clover that is tried and tested scoring well in all categories	1	
RED CLOVER				
Magellan	Red Clover (T)	Very high yields of protein rich forage particularly in second and third cuts	1	✓
Pavo	Red Clover	A good very early flowering variety		
Sangria	Red Clover	A good strong French Red Clover that measures up well against others		
Amos	Red Clover (T)	Great persistence maintaining high yields from and early to intermediate variety	1	✓



# Swedes

Swedes are a full season crop that will last until the end of March or early April. They may be grazed in situ or lifted for stock feed or culinary use. They perform well in Scotland and the north producing 70 to 80 tonnes of fresh weight per hectare of high ME feed (12.8 to 13.1 MJ/kg DM).

Variety	Skin Colour	Flesh Colour	Dry Matter	Comments
Airlie	Light Purple	Creamy white	Low/Medium	Good disease resistance and very uniform
Gowrie	Purple	Yellow	Medium	Uniform, high yielding and has some club root tolerance and good mildew
Invitation	Purple/Bronze	Yellow	Very high	Very high yielding and winter hardy. Excellent resistance to club root and mildew
Kenmore	Bronze/Green	White	Medium	Good winter hardiness giving a wide window of utilisation. Big fresh yields
Lomond	Purple	Yellow	Medium/High	Good club root and mildew resistance
Marian	Purple	Yellow	Medium	A good culinary variety
Ruta Otofte	Dark Purple	Cream	Medium/High	Very popular variety with sheep farmers. Good winter hardiness

# Fodder Beet

High yielding and palatable. High dry matter varieties sit lower into the ground, are more frost tolerant but often have a higher dirt tare. Medium dry matter varieties sit out of the ground more, are easier to harvest and may be grazed. Good weed control is essential when establishing fodder beets.

Variety	Colour	Comments
Alpes	Yellow	Easy lifting variety, very clean, popular
Bangor	Yellow	High yielding above the ground and excellent for grazing in situ
Monro <span>NEW</span>	Red	Low DM, high yielding variety for grazing in situ
Jamon	Orange	Very palatable. Can be grazed in situ
Enermax	White	A dual purpose variety, very high yields, clean
Kyros	White	A good value for money variety. High DM, low growing
Magnum	White	A well-known reliable variety. High DM, low growing
Nestor	White	A good value for money variety. High DM, low growing

# Kale

The highest yielding leafy brassica. Grazed by sheep and cattle and occasionally ensiled. Good frost tolerance, but MUST be looked after with good fertility, weed and pest control.

Variety	Height	Use	Comments
Goldeneye	Very tall	Game cover	Strong stem and leafy top, club root tolerant
Gruner Angeliter	Very tall	Cattle	Winter hardy and very high yielding
Maris Kestrel	Medium short	Sheep	Popular leafy sheep grazing variety
Sovereign	Medium tall	Cattle and sheep	High leaf to stem ratio, winter hardy and club root tolerant. Our best selling kale

# Stubble Turnips

Stubble turnips are a fast growing catch crop that are ready to start grazing from 10 to 12 weeks after sowing. Bulbing types are more winter hardy than leafy types, which have better root systems.

Variety	Type	Comments
Barkant	Bulb	Very popular high yielding variety with some winter hardiness. Roots are slightly smaller, but highly digestible
Vollenda	Bulb	Large leaves on this fast establishing tetraploid variety. Good bulb size and palatability
Avalon	Leafy	A new variety. Very leafy and covers the ground quickly
Tyfon	Leafy	It is a cross between a Chinese cabbage and a stubble turnip. Fast growing with reasonable potential for regrowth
Green Globe	Maincrop	Very high fresh yields from large, well anchored and palatable roots. Can be utilised to the end of January

# Forage Rape and Hybrids

This fast growing crop can be utilised by cattle and sheep and has a wide period of utilisation (mid summer and autumn). Highly digestible energy crop which is very palatable and is relatively simple to establish.

Variety	Type	Comments
Emerald	Forage rape	Very popular, fast establishing and palatable. Good disease resistance. Proven over many years in all areas
Akela (organic)	Forage rape	Very late flowering with good winter hardiness. Only Organic seed available
Spitfire	Rape x kale cross	High DM yields of palatable leafy growth. Stems have a low DM so are often grazed. Has good regrowth potential
Zoom (Composite)	Hybrid brassica and rape	A mixture of Winfred hybrid brassica and forage rape which is exceptionally quick to establish and has excellent leaf to stem ratio

“

Vollenda sown in early August and photographed at the end of October, fertilised with 90 units of N = 48t/Ha fresh yield.

John Forman  
Fridayhill  
Strichen



# Basic Payment Scheme – Greening

Greening has been introduced to improve the environmental performance of farming. It is mandatory for applicants to the Basic Payment Scheme BPS to comply with greening requirements, where relevant. There are three elements to Greening :-

Permanent Pasture

Land out of rotation for more than five years

Crop Diversification on Arable Land

Often called the “3 crop rule” (temporary grass is also arable)

Ecological Focus Areas (EFA)

6 different options to manage a weighted 5% of land as EFA

The basic principles of Greening are the same throughout the UK, but each region has its own specific requirements. Below are the English Greening options. Please check the exact regulations within your own area.

Variety	Basic Guide	EFA Weighting	Suggested Mixtures
EFA Buffer Strips and Field Margins	Buffer Strips must be next to or run parallel with a water course or on a slope leading to a water course. In addition to buffer strips you can now claim field margins towards your EFA (beyond strips adjacent or parallel to water courses). Minimum width of 1 metre.  The same buffer strips can be used to meet both greening and cross compliance rules.	1m Length = 9m <sup>2</sup> (1112m = 1ha)	BGM mixtures Legume & Herb mixtures Herbal Meadow Specials Rich Grass mixtures Wildflower Rich margin
EFA Fallow Land	Fallow Period 1st January to 30th June.  Minimum width 2m wide with a minimum area of 0.01ha. Wild Bird Mixtures & Nectar Rich Mixtures encouraged. Temporary grass & buffer strips can be managed as fallow. Grass can be sown during the fallow period as long as there is no production during the fallow period. Fallow land can be mown as long as the cuttings are left on the land. Can utilise grass after fallow period.	1m <sup>2</sup> (1ha = 1ha)	EFA Fallow mixtures See opposite
EFA Catch crops / Cover crops	Catch crops established by 20th August and retained until at least 14th October. Cover crops established by 1st October and retained until 15th January. Must consist of a sown mix of at least 2 different cover types (1 cereal & 1 non-cereal) that establishes quickly, achieves good ground cover and has different root depths. Crops to choose from are rye, oats, barley, phacelia, mustard, vetch, radish and Lucerne. The list does not include crops that would usually be grazed. Minimum area 0.01ha. Grass can also be used, but it must be undersown in the previous crop and established.	0.3m <sup>2</sup> (3.3ha = 1ha)	Revival mixtures N-Rich Cover mixture N-Hance Cover mixture N-Retain
EFA Nitrogen Fixing Crops Mixture	An eligible list of leguminous crops has been published. In addition to pure stands of nitrogen fixing crop you will be allowed to sow a mixture of different nitrogen fixing crop species or mixtures of nitrogen fixing crops and other crops, as long as 50%+ is nitrogen fixing crops. Must be in the ground 1st May-30th June. Minimum plot size 0.01 ha.	0.7m <sup>2</sup> (1.4ha = 1ha)	All Clovers Peas Beans Birds Foot Trefoil Sainfoin Lucerne Vetch Black Medick Yellow Blossom Clover
EFA Hedges	Hedges need to be next to arable land. Minimum length 20 metres, with no minimum height or width. Newly planted hedges eligible.	1m Length = 10m <sup>2</sup> (1km = 1ha)	

## HF Fallow Mixture No.1

35% Late Perennial Ryegrass (diploid)
50% Late Perennial Ryegrass (tetraploid)
10% Timothy
5% White Clover Blend
100%

- The Timothy and the late heading Perennial Ryegrasses will have kept their feed quality much better than a conventional mixture would have done
- Will give an easily won crop after 1st July
- As no fertiliser may be applied the clover is very important

Recommended sowing rate:  
12-14 kg/acre 30-35 kg/HA

## HF Fallow Mixture No.2

40% Late Perennial Ryegrass (diploid)
50% Late Perennial Ryegrass (tetraploid)
10% Timothy
100%

- This mixture has NO White Clover for situations where weed control may need to be carried out after 1st of July
- This should make a classic hay or haylage crop
- Low energy and low potash feed – ideal for dry cows

Recommended sowing rate:  
12-14 kg/acre 30-35 kg/HA

## HF Fallow Mixture No.3

40% Late Perennial Ryegrass (diploid)
55% Late Perennial Ryegrass (tetraploid)
5% White Clover Blend
100%

- This mixture has NO Timothy for lighter soils or where aftermath grazing is most important. Fertiliser may be applied after the end of the fallow period (1st July)
- Plenty of fresh clean grass at a really useful time of year

Recommended sowing rate:  
12-14 kg/acre 30-35 kg/HA

## HF Your Countryside

For further advice in the specialist area of game cover, environmental stewardship and fodder crops or to request an HF Countryside brochure please contact your HF distributor or phone HF Seeds direct on 01506 674800







### Nick Duggan

Business Manager  
(Central England)

T : +44 (0) 1506 674808  
M : +44 (0) 7976 740973  
E : nduggan@dlf.co.uk



### Michael Mulgrew

Business & Technical Support

T : +44 (0) 1506 674806  
M : +44 (0) 7890313137  
E : mmulgrew@dlf.co.uk



### Anna Mead

Product Manager - Roots,  
Gamecover & Stewardship

T : +44 (0) 1386 791101  
M : +44 (0) 782 5625260  
E : amead@dlf.co.uk



### David Rhodes

Technical Manager

T : +44 (0) 1522 706502  
M : +44 (0) 7976 618227  
E : drhodes@dlf.co.uk



### Mark Simes

Business Manager  
(South & South West England)

T : +44 (0) 1305 265583  
M : +44 (0) 7854 508322  
E : msimes@dlf.co.uk



### Paddy Jack

Business Manager  
(Scotland & Northern England)

T : +44 (0) 1506 674815  
M : +44 (0) 7764 568464  
E : pjack@dlf.co.uk



### Damian McAllister

Ireland Manager

T : +353 (0) 51 897 060  
M : +44 (0) 777 4249609  
E : dmcallister@dlfseeds.ie



### Clive Sutton

Business Development  
Manager

T : +44 (0) 1386 791101  
M : +44 (0) 7775 661709  
E : csutton@dlf.co.uk

YOUR NEAREST HF DISTRIBUTOR IS

 **countryside seeds limited**  
**Supplying Quality Seeds**

Contact Kevin:

Mobile: 07881 804442

Home/Office: 01872 270621

Email: kevin@countrysideseeds.com

**HF**  
**Seeds**  
ENGLAND & WALES

Marketed by:

**DLF**  
SEEDS & SCIENCE

10 Westerton Road  
East Mains Industrial Estate  
Broxburn, West Lothian  
EH52 5AU

Tel : 01506 674800  
Fax : 01506 691212

Thorn Farm  
Inkberrow  
Worcestershire  
WR7 4LJ

Tel : 01386 791101  
Fax : 01386 792216

[www.dlf.co.uk](http://www.dlf.co.uk)

CONTACT HF SEEDS ON 01506 674800 FOR ALL YOUR FORAGE SOLUTIONS

DLF Seeds Ltd V.A.T. Registration No 650 3086 60 Registered in England & Wales Company Registration No. 2971802  
Registered Office: Thorn Farm, Inkberrow, Worcestershire WR7 4LJ